
TABLE OF CONTENTS

Awning Units	4-2
Casement Units	4-7
Casement Picture Units	4-10
Casement Quarter RD Units	4-16
Casement HR Units	4-17
Extended Quarter RD Units	4-18
Extended HR Units	4-20

ELEVATIONS
SINGLE UNITS

MO BRICKMOLD	21 3/4"(552)	23 3/4"(603)	27 3/4"(705)	31 3/4"(806)	33 3/4"(857)	35 3/4"(908)	39 3/4"(1010)
MO FLAT CASING	24 13/16"(630)	26 13/16"(681)	30 13/16"(783)	34 13/16"(884)	36 13/16"(935)	38 13/16"(986)	42 13/16"(1087)
ROUGH OPENING	18 3/4"(476)	20 3/4"(527)	24 3/4"(629)	28 3/4"(730)	30 3/4"(781)	32 3/4"(832)	36 3/4"(933)
FRAME SIZE	18"(457)	20"(508)	24"(610)	28"(711)	30"(762)	32"(813)	36"(914)
DAYLIGHT OPENING	11 7/8"(302)	13 7/8"(352)	17 7/8"(454)	21 7/8"(556)	23 7/8"(607)	25 7/8"(657)	29 7/8"(759)
21 27/32"(565) 23 3/8"(588) 18 3/4"(476) 18"(457) 11 7/8"(302)							
CWEA1818	CWEA2018	CWEA2418	CWEA2818	CWEA3018	CWEA3218	CWEA3618	
23 27/32"(606) 25 3/8"(645) 20 3/4"(527) 20"(508) 13 7/8"(352)							
CWEA1820	CWEA2020	CWEA2420	CWEA2820	CWEA3020	CWEA3220	CWEA3620	
27 27/32"(707) 29 3/8"(746) 24 3/4"(629) 24"(610) 17 7/8"(454)							
CWEA1824	CWEA2024	CWEA2424	CWEA2824	CWEA3024	CWEA3224	CWEA3624	
31 27/32"(809) 33 3/8"(848) 28 3/4"(730) 28"(711) 21 7/8"(556)							
CWEA1828	CWEA2028	CWEA2428	CWEA2828	CWEA3028	CWEA3228	CWEA3628	
33 27/32"(860) 35 3/8"(899) 30 3/4"(781) 30"(762) 23 7/8"(607)							
CWEA1830	CWEA2030	CWEA2430	CWEA2830	CWEA3030	CWEA3230	CWEA3630	
35 27/32"(910) 37 3/8"(949) 32 3/4"(832) 32"(813) 25 7/8"(657)							
CWEA1832	CWEA2032	CWEA2432	CWEA2832	CWEA3032	CWEA3232	CWEA3632	
39 27/32"(1012) 41 3/8"(1051) 36 3/4"(933) 36"(914) 29 7/8"(759)							
CWEA1836	CWEA2036	CWEA2436	CWEA2836	CWEA3036	CWEA3236	CWEA3636	
43 27/32"(1114) 45 3/8"(1153) 40 3/4"(1035) 40"(1016) 33 7/8"(860)							
					CWEA3240	CWEA3640	
45 27/32"(1164) 47 3/8"(1203) 42 3/4"(1086) 42"(1067) 35 7/8"(911)							
					CWEA3242	CWEA3642	

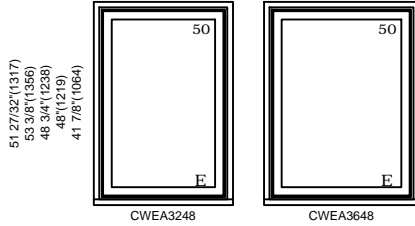
ELEVATION SYMBOL LEGEND:

- M.O. = MASORNY OPENING
- VALUES IN () ARE IN MILLIMETER CONVERSIONS
- E BASIC UNIT CLEAR OPENING EXCEEDS 20" IN WIDTH, 24" IN HEIGHT & A MINIMUM OF 5.7 SQ. FT.
- *# NUMBER INDICATES DESIGN PRESSURE (DP) RATING WITH STANDARD GLAZING
- STATIONARY UNITS ONLY

Note: Elevations shown DO NOT have exterior trim. Subtract 3/4"(19) from M.O.(Masonry Opening) for Unit Sizes. Masonry openings above include Sill Nose, see Trim Options page for Sill Nose specifications. For other Trim Options refer to the Unit Sizing, Rough Opening & Masonry Openings page.

ELEVATIONS
SINGLE UNITS

MO BRICKMOLD	35 3/4"(908)	39 3/4"(1010)
MO FLAT CASING	38 13/16"(986)	42 13/16"(1087)
ROUGH OPENING	32 3/4"(832)	36 3/4"(933)
FRAME SIZE	32"(813)	36"(914)
DAYLIGHT OPENING	25 7/8"(657)	29 7/8"(759)



ELEVATION SYMBOL LEGEND:

- M.O. = MASORNY OPENING
- VALUES IN () ARE IN MILLIMETER CONVERSIONS
- E BASIC UNIT CLEAR OPENING EXCEEDS 20" IN WIDTH, 24" IN HEIGHT & A MINIMUM OF 5.7 SQ. FT.
- ## NUMBER INDICATES DESIGN PRESSURE (DP) RATING WITH STANDARD GLAZING
- * STATIONARY UNITS ONLY

Note: Elevations shown DO NOT have exterior trim. Subtract 3/4"(19) from M.O.(Masonry Opening) for Unit Sizes. Masonry openings above include Sill Nose, see Trim Options page for Sill Nose specifications. For other Trim Options refer to the Unit Sizing, Rough Opening & Masonry Openings page.

ELEVATIONS
SINGLE UNITS

MO BRICKMOLD
MO FLAT CASING
ROUGH OPENING
FRAME SIZE
DAYLIGHT OPENING

43 3/4"(1111)
46 13/16"(1189)
40 3/4"(1035)
40"(1016)
33 7/8"(860)

45 3/4"(1162)
48 13/16"(1240)
42 3/4"(1086)
42"(1067)
35 7/8"(911)

51 3/4"(1314)
54 13/16"(1392)
48 3/4"(1238)
48"(1219)
41 7/8"(1064)

57 3/4"(1467)
60 13/16"(1545)
54 3/4"(1391)
54"(1372)
47 7/8"(1216)

59 3/4"(1518)
62 13/16"(1595)
56 3/4"(1441)
56"(1422)
49 7/8"(1267)

21 27/32"(555)
23 3/8"(568)
18 3/4"(476)
18"(457)
11 7/8"(302)



CWEA4018



CWEA4218



CWEA4818



CWEA5418



CWEA5618

23 27/32"(606)
25 3/8"(645)
20 3/4"(527)
20"(508)
13 7/8"(352)



CWEA4020



CWEA4220



CWEA4820

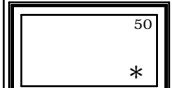


CWEA5420

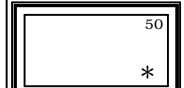


CWEA5620

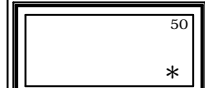
27 27/32"(707)
29 3/8"(746)
24 3/4"(629)
24"(610)
17 7/8"(454)



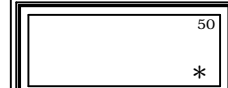
CWEA4024



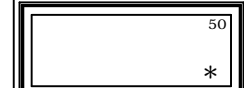
CWEA4224



CWEA4824



CWEA5424



CWEA5624

31 27/32"(809)
33 3/8"(848)
28 3/4"(730)
28"(711)
21 7/8"(556)



CWEA4028



CWEA4228



CWEA4828



CWEA5428



CWEA5628

33 27/32"(860)
35 3/8"(899)
30 3/4"(781)
30"(762)
23 7/8"(607)



CWEA4030



CWEA4230



CWEA4830

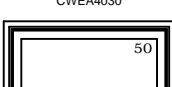


CWEA5430

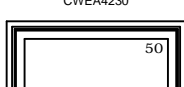


CWEA5630

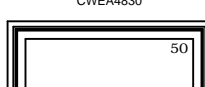
35 27/32"(910)
37 3/8"(949)
32 3/4"(832)
32"(813)
25 7/8"(657)



CWEA4032



CWEA4232



CWEA4832



CWEA5432



CWEA5632

39 27/32"(1012)
41 3/8"(1051)
36 3/4"(933)
36"(914)
29 7/8"(759)



CWEA4036



CWEA4236



CWEA4836



CWEA5436



CWEA5636

43 27/32"(1114)
45 3/8"(1153)
40 3/4"(1035)
40"(1016)
33 7/8"(860)



CWEA4040



CWEA4240



CWEA4840

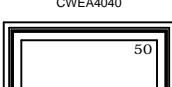


CWEA5440

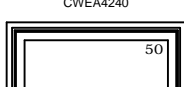


CWEA5640

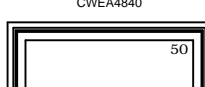
45 27/32"(1164)
47 3/8"(1203)
42 3/4"(1086)
42"(1067)
35 7/8"(911)



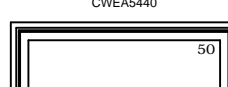
CWEA4042



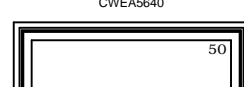
CWEA4242



CWEA4842



CWEA5442



CWEA5642

ELEVATION SYMBOL LEGEND:

- M.O. = MASORNY OPENING
- VALUES IN () ARE IN MILLIMETER CONVERSIONS
- E BASIC UNIT CLEAR OPENING EXCEEDS 20" IN WIDTH, 24" IN HEIGHT & A MINIMUM OF 5.7 SQ. FT.
- *## NUMBER INDICATES DESIGN PRESSURE (DP) RATING WITH STANDARD GLAZING
- STATIONARY UNITS ONLY

Note: Elevations shown DO NOT have exterior trim. Subtract 3/4"(19) from M.O. (Masonry Opening) for Unit Sizes. Masonry openings above include Sill Nose, see Trim Options page for Sill Nose specifications. For other Trim Options refer to the Unit Sizing, Rough Opening & Masonry Openings page.

ELEVATIONS SINGLE UNITS

MO BRICKMOLD
MO FLAT CASING
ROUGH OPENING
FRAME SIZE
DAYLIGHT OPENING

43 3/4"(1111)
46 13/16"(1189)
40 3/4"(1035)
40"(1016)
33 7/8"(860)

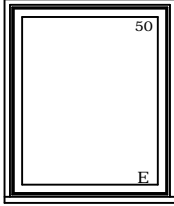
45 3/4"(1162)
48 13/16"(1240)
42 3/4"(1086)
42"(1067)
35 7/8"(911)

51 3/4"(1314)
54 13/16"(1392)
48 3/4"(1238)
48"(1219)
41 7/8"(1064)

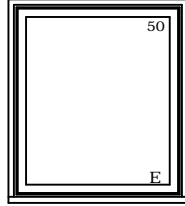
57 3/4"(1467)
60 13/16"(1545)
54 3/4"(1391)
54"(1372)
47 7/8"(1216)

59 3/4"(1518)
62 13/16"(1595)
56 3/4"(1441)
56"(1422)
49 7/8"(1267)

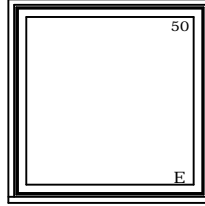
51 27/32"(1317)
53 3/8"(1356)
48 3/4"(1238)
48"(1219)
41 7/8"(1064)



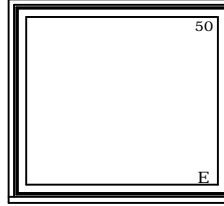
CWEA4048



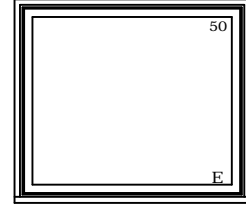
CWEA4248



CWEA4848



CWEA5448



CWEA5648

ELEVATION SYMBOL LEGEND:

- M.O. = MASORNY OPENING
- VALUES IN () ARE IN MILLIMETER CONVERSIONS
- E BASIC UNIT CLEAR OPENING EXCEEDS 20" IN WIDTH, 24" IN HEIGHT & A MINIMUM OF 5.7 SQ. FT.
- *## NUMBER INDICATES DESIGN PRESSURE (DP) RATING WITH STANDARD GLAZING STATIONARY UNITS ONLY

Note: Elevations shown DO NOT have exterior trim. Subtract 3/4"(19) from M.O.(Masonry Opening) for Unit Sizes. Masonry openings above include Sill Nose, see Trim Options page for Sill Nose specifications. For other Trim Options refer to the Unit Sizing, Rough Opening & Masonry Openings page.

ELEVATIONS
SINGLE UNITS

MO BRICKMOLD
MO FLAT CASING
ROUGH OPENING
FRAME SIZE
DAYLIGHT OPENING

63 3/4"(1619)
66 13/16"(1722)
60 3/4"(1543)
60"(1524)
53 7/8"(1368)

MO BRICKMOLD
MO FLAT CASING
ROUGH OPENING
FRAME SIZE
DAYLIGHT OPENING

63 3/4"(1619)
66 13/16"(1722)
60 3/4"(1543)
60"(1524)
53 7/8"(1368)

21 27/32"(555)
23 3/8"(588)
18 3/4"(476)
18"(457)
11 7/8"(302)



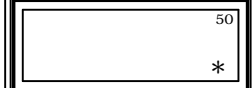
CWEA6018

23 27/32"(606)
25 3/8"(645)
20 3/4"(527)
20"(508)
13 7/8"(352)



CWEA6020

27 27/32"(707)
29 3/8"(746)
24 3/4"(629)
24"(610)
17 7/8"(454)



CWEA6024

31 27/32"(809)
33 3/8"(848)
28 3/4"(730)
28"(711)
21 7/8"(556)



CWEA6028

33 27/32"(860)
35 3/8"(899)
30 3/4"(781)
30"(762)
23 7/8"(607)



CWEA6030

35 27/32"(910)
37 3/8"(949)
32 3/4"(832)
32"(813)
25 7/8"(657)



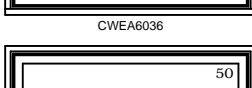
CWEA6032

39 27/32"(1012)
41 3/8"(1051)
36 3/4"(933)
36"(914)
29 7/8"(759)



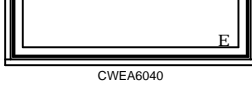
CWEA6036

43 27/32"(1114)
45 3/8"(1153)
40 3/4"(1035)
40"(1016)
33 7/8"(860)



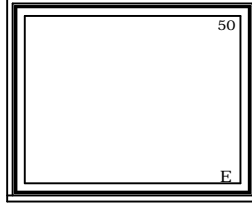
CWEA6040

45 27/32"(1164)
47 3/8"(1203)
42 3/4"(1086)
42"(1067)
35 7/8"(911)



CWEA6042

51 27/32"(1317)
53 3/8"(1366)
48 3/4"(1238)
44 3/4"(1119)
41 7/8"(1064)



CWEA6048

ELEVATION SYMBOL LEGEND:

- M.O. = MASORNY OPENING
- VALUES IN () ARE IN MILLIMETER CONVERSIONS
- E: BASIC UNIT CLEAR OPENING EXCEEDS 20" IN WIDTH, 24" IN HEIGHT & A MINIMUM OF 5.7 SQ. FT.
- ## NUMBER INDICATES DESIGN PRESSURE (DP) RATING WITH STANDARD GLAZING
- * STATIONARY UNITS ONLY

Note: Elevations shown DO NOT have exterior trim. Subtract 3/4"(19) from M.O.(Masorny Opening) for Unit Sizes. Masorny openings above include Sill Nose, see Trim Options page for Sill Nose specifications. For other Trim Options refer to the Unit Sizing, Rough Opening & Masorny Openings page.

ELEVATIONS
CASEMENT UNITS

MO BRICKMOLD MO FLAT CASING ROUGH OPENING FRAME SIZE DAYLIGHT OPENING	21 3/4"(552) 24 13/16"(630) 18 3/4"(476) 18"(457) 11 7/8"(302)	23 3/4"(603) 26 13/16"(681) 20 3/4"(527) 20"(508) 13 7/8"(352)	27 3/4"(705) 30 13/16"(783) 24 3/4"(629) 24"(610) 17 7/8"(454)	31 3/4"(806) 34 13/16"(884) 28 3/4"(730) 28"(711) 21 7/8"(556)	33 3/4"(857) 36 13/16"(935) 30 3/4"(781) 30"(762) 23 7/8"(607)	35 3/4"(908) 38 13/16"(986) 32 3/4"(832) 32"(813) 25 7/8"(657)	39 3/4"(1010) 42 13/16"(1087) 36 3/4"(933) 36"(914) 29 7/8"(759)
17 27/32"(453) 19 3/8"(492) 14 3/4"(375) 14"(356) 7 7/8"(200)							
21 27/32"(555) 23 3/8"(568) 18 3/4"(476) 18"(457) 11 7/8"(302)							
23 27/32"(606) 25 3/8"(645) 20 3/4"(527) 20"(508) 13 7/8"(352)							
27 27/32"(707) 29 3/8"(746) 24 3/4"(629) 24"(610) 17 7/8"(454)							
33 27/32"(860) 35 3/8"(899) 30 3/4"(781) 30"(762) 23 7/8"(607)							
35 27/32"(910) 37 3/8"(949) 32 3/4"(832) 32"(813) 25 7/8"(657)							
39 27/32"(1012) 41 3/8"(1051) 36 3/4"(933) 36"(914) 29 7/8"(759)							
43 27/32"(1114) 45 3/8"(1153) 40 3/4"(1035) 40"(1016) 33 7/8"(860)							
45 27/32"(1164) 47 3/8"(1203) 42 3/4"(1086) 42"(1067) 35 7/8"(911)							

ELEVATION SYMBOL LEGEND:
M.O. = MASORNY OPENING
VALUES IN () ARE IN MILLIMETER CONVERSIONS
E BASIC UNIT CLEAR OPENING EXCEEDS 20" IN WIDTH, 24" IN HEIGHT & A MINIMUM OF 5.7 SQ. FT.
NUMBER INDICATES DESIGN PRESSURE (DP) RATING WITH STANDARD GLAZING
* STATIONARY UNITS ONLY

Note: Elevations shown DO NOT have exterior trim. Subtract 3/4"(19) from M.O. (Masonry Opening) for Unit Sizes. Masonry openings above include Sill Nose, see Trim Options page for Sill Nose specifications. For other Trim Options refer to the Unit Sizing, Rough Opening & Masonry Openings page.

ELEVATIONS
CASEMENT UNITS

	MO BRICKMOLD MO FLAT CASING ROUGH OPENING FRAME SIZE DAYLIGHT OPENING	21 3/4"(552) 24 13/16"(630) 18 3/4"(476) 18"(457) 11 7/8"(302)	23 3/4"(603) 26 13/16"(681) 20 3/4"(527) 20"(508) 13 7/8"(352)	27 3/4"(705) 30 13/16"(783) 24 3/4"(629) 24"(610) 17 7/8"(454)	31 3/4"(806) 34 13/16"(884) 28 3/4"(730) 28"(711) 21 7/8"(556)	33 3/4"(857) 36 13/16"(935) 30 3/4"(781) 30"(762) 23 7/8"(607)	35 3/4"(908) 38 13/16"(986) 32 3/4"(832) 32"(813) 25 7/8"(657)	39 3/4"(1010) 42 13/16"(1087) 36 3/4"(933) 36"(914) 29 7/8"(759)
51 27/32"(1317) 53 3/8"(1356) 48 3/4"(1238) 48"(1219) 41 7/8"(1064)								
	CWEC1848	CWEC2048	CWEC2448	CWEC2848	CWEC3048	CWEC3248	CWEC3648	CWEC3648
57 27/32"(1469) 59 3/8"(1508) 54 3/4"(1391) 54"(1372) 47 7/8"(1216)								
	CWEC1854	CWEC2054	CWEC2454	CWEC2854	CWEC3054	CWEC3254	CWEC3654	CWEC3654
59 27/32"(1520) 61 3/8"(1559) 56 3/4"(1441) 56"(1422) 49 7/8"(1267)								
	CWEC1856	CWEC2056	CWEC2456	CWEC2856	CWEC3056	CWEC3256	CWEC3656	CWEC3656
63 27/32"(1622) 65 3/8"(1660) 60 3/4"(1543) 60"(1524) 53 7/8"(1368)								
	CWEC1860	CWEC2060	CWEC2460	CWEC2860	CWEC3060	CWEC3260	CWEC3660	CWEC3660
67 27/32"(1723) 69 3/8"(1762) 64 3/4"(1645) 64"(1626) 57 7/8"(1470)								
	CWEC1864	CWEC2064	CWEC2464	CWEC2864	CWEC3064	CWEC3264	CWEC3664	CWEC3664

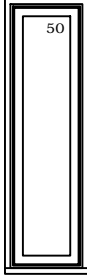
ELEVATION SYMBOL LEGEND:
M.O. = MASORNY OPENING
VALUES IN () ARE IN MILLIMETER CONVERSIONS
E BASIC UNIT CLEAR OPENING EXCEEDS 20" IN WIDTH, 24" IN HEIGHT & A MINIMUM OF 5.7 SQ. FT.
NUMBER INDICATES DESIGN PRESSURE (DP) RATING WITH STANDARD GLAZING

Note: Elevations shown DO NOT have exterior trim. Subtract 3/4"(19) from M.O.(Masonry Opening) for Unit Sizes. Masonry openings above include Sill Nose, see Trim Options page for Sill Nose specifications. For other Trim Options refer to the Unit Sizing, Rough Opening & Masonry Openings page.

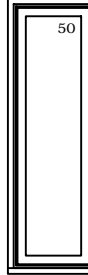
ELEVATIONS
CASEMENT UNITS

MO BRICKMOLD	21 3/4"(552)	23 3/4"(603)	27 3/4"(705)	31 3/4"(806)	33 3/4"(857)	35 3/4"(908)	39 3/4"(1010)
MO FLAT CASING	24 13/16"(630)	26 13/16"(681)	30 13/16"(783)	34 13/16"(884)	36 13/16"(935)	38 13/16"(986)	42 13/16"(1087)
ROUGH OPENING	18 3/4"(476)	20 3/4"(527)	24 3/4"(629)	28 3/4"(730)	30 3/4"(781)	32 3/4"(832)	36 3/4"(933)
FRAME SIZE	18"(457)	20"(508)	24"(610)	28"(711)	30"(762)	32"(813)	36"(914)
DAYLIGHT OPENING	11 7/8"(302)	13 7/8"(352)	17 7/8"(454)	21 7/8"(556)	23 7/8"(607)	25 7/8"(657)	29 7/8"(759)

69 27/32"(1774)
71 3/8"(1813)
66 3/4"(1695)
66"(1676)
59 7/8"(1581)



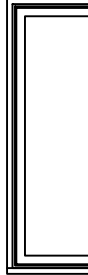
CWEC1866



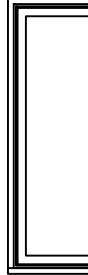
CWEC2066



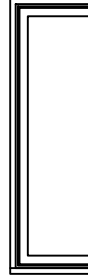
CWEC2466



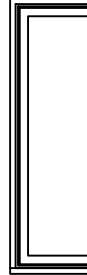
CWEC2866



CWEC3066

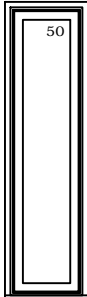


CWEC3266

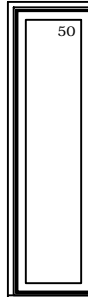


CWEC3666

75 27/32"(1926)
77 3/8"(1965)
72 3/4"(1848)
72"(1829)
65 7/8"(1673)



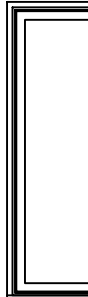
CWEC1872



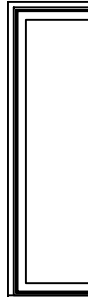
CWEC2072



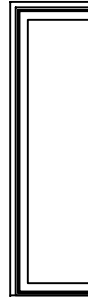
CWEC2472



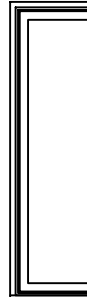
CWEC2872



CWEC3072

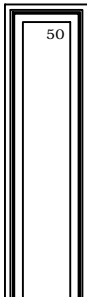


CWEC3272

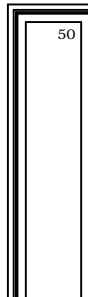


CWEC3672

81 27/32"(2079)
83 3/8"(2118)
78 3/4"(2000)
78"(1981)
71 7/8"(1826)



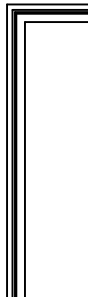
CWEC1878



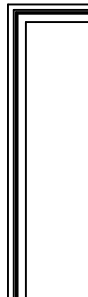
CWEC2078



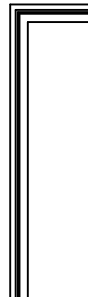
CWEC2478



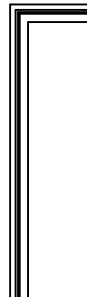
CWEC2878



CWEC3078

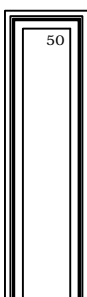


CWEC3278

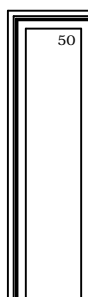


CWEC3678

87 27/32"(2231)
89 3/8"(2270)
84 3/4"(2153)
84"(2134)
77 7/8"(1978)



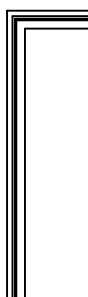
CWEC1884



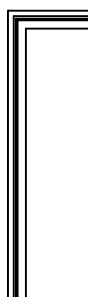
CWEC2072



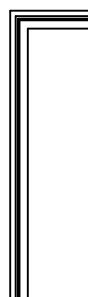
CWEC2472



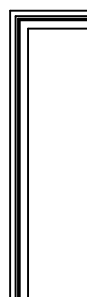
CWEC2872



CWEC3072



CWEC3272



CWEC3672

ELEVATION SYMBOL LEGEND:

M.O. = MASONRY OPENING
VALUES IN () ARE IN MILLIMETER CONVERSIONS
E' BASIC UNIT CLEAR OPENING EXCEEDS 20" IN WIDTH, 24" IN HEIGHT & A MINIMUM OF 5.7 SQ. FT.
NUMBER INDICATES DESIGN PRESSURE (DP) RATING WITH STANDARD GLAZING

Note: Elevations shown DO NOT have exterior trim. Subtract 3/4"(19) from M.O.(Masonry Opening) for Unit Sizes. Masonry openings above include Sill Nose, see Trim Options page for Sill Nose specifications. For other Trim Options refer to the Unit Sizing, Rough Opening & Masonry Openings page.

ELEVATIONS
CASEMENT PICTURE UNITS

MO BRICKMOLD
MO FLAT CASING
ROUGH OPENING
FRAME SIZE
DAYLIGHT OPENING

43 3/4"(1111)
46 13/16"(1189)
40 3/4"(1036)
40"(1016)
33 7/8"(860)

45 3/4"(1162)
48 13/16"(1240)
42 3/4"(1086)
42"(1067)
35 7/8"(911)

51 3/4"(1314)
54 13/16"(1392)
48 3/4"(1238)
48"(1219)
41 7/8"(1064)

57 3/4"(1467)
60 13/16"(1545)
54 3/4"(1391)
54"(1372)
47 7/8"(1216)

59 3/4"(1518)
62 13/16"(1595)
56 3/4"(1441)
56"(1422)
49 7/8"(1267)

17 27/32"(453)
19 3/8"(492)
14 3/4"(375)
14"(457)
7 7/8"(200)



CWEP4014



CWEP4214



CWEP4814



CWEP5414



CWEP5614

21 27/32"(555)
23 3/8"(588)
18 3/4"(476)
18"(457)
11 7/8"(302)



CWEP4018



CWEP4218



CWEP4818



CWEP5418



CWEP5618

23 27/32"(606)
25 3/8"(645)
20 3/4"(527)
20"(508)
13 7/8"(352)



CWEP4020



CWEP4220



CWEP4820

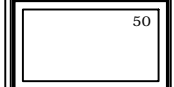


CWEP5420

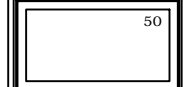


CWEP5620

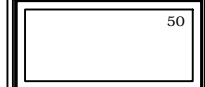
27 27/32"(707)
29 3/8"(746)
24 3/4"(629)
24"(610)
17 7/8"(454)



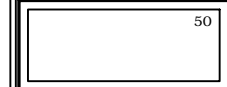
CWEP4024



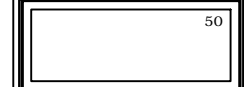
CWEP4224



CWEP4824



CWEP5424



CWEP5624

33 27/32"(860)
35 3/8"(899)
30 3/4"(781)
30"(762)
23 7/8"(607)



CWEP4030



CWEP4230



CWEP4830



CWEP5430



CWEP5630

35 27/32"(910)
37 3/8"(949)
32 3/4"(832)
32"(813)
25 7/8"(657)



CWEP4032



CWEP4232



CWEP4832

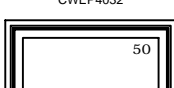


CWEP5432

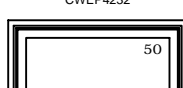


CWEP5632

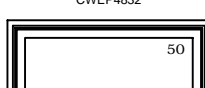
39 27/32"(1012)
41 3/8"(1051)
36 3/4"(933)
36"(914)
29 7/8"(759)



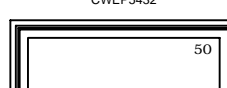
CWEP4036



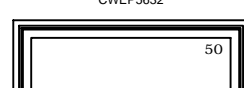
CWEP4236



CWEP4836

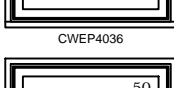


CWEP5436

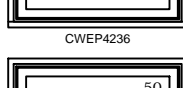


CWEP5636

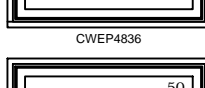
43 27/32"(1114)
45 3/8"(1153)
40 3/4"(1035)
40"(1016)
33 7/8"(860)



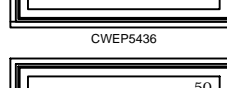
CWEP4040



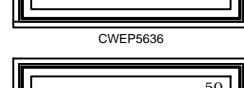
CWEP4240



CWEP4840



CWEP5440



CWEP5640

45 27/32"(1164)
47 3/8"(1203)
42 3/4"(1086)
42"(1067)
35 7/8"(911)



CWEP4042



CWEP4242



CWEP4842



CWEP5442



CWEP5642

ELEVATION SYMBOL LEGEND:

M.O. = MASORNY OPENING
VALUES IN () ARE IN MILLIMETER CONVERSIONS
E BASIC UNIT CLEAR OPENING EXCEEDS 20" IN WIDTH, 24" IN HEIGHT & A MINIMUM OF 5.7 SQ. FT.
NUMBER INDICATES DESIGN PRESSURE (DP) RATING WITH STANDARD GLAZING

Note: Elevations shown DO NOT have exterior trim. Subtract 3/4"(19) from M.O.(Masonry Opening) for Unit Sizes. Masonry openings above include Sill Nose, see Trim Options page for Sill Nose specifications. For other Trim Options refer to the Unit Sizing, Rough Opening & Masonry Openings page.

ELEVATIONS
CASEMENT PICTURE UNITS

MO BRICKMOLD
MO FLAT CASING
ROUGH OPENING
FRAME SIZE
DAYLIGHT OPENING

43 3/4"(1111)
46 13/16"(1189)
40 3/4"(1035)
40"(1016)
33 7/8"(860)

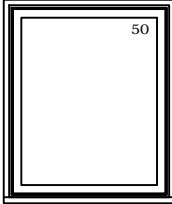
45 3/4"(1162)
48 13/16"(1240)
42 3/4"(1086)
42"(1067)
35 7/8"(911)

51 3/4"(1314)
54 13/16"(1392)
48 3/4"(1238)
48"(1219)
41 7/8"(1064)

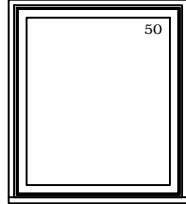
57 3/4"(1467)
60 13/16"(1545)
54 3/4"(1391)
54"(1372)
47 7/8"(1216)

59 3/4"(1518)
62 13/16"(1595)
56 3/4"(1441)
56"(1422)
49 7/8"(1267)

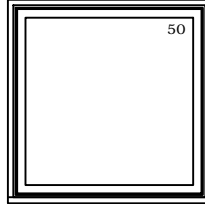
51 27/32"(1317)
53 3/8"(1356)
48 3/4"(1238)
48"(1219)
41 7/8"(1064)



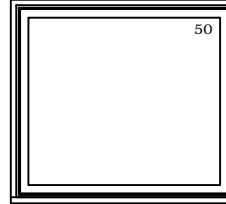
CWEP4048



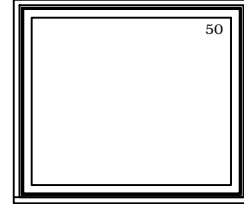
CWEP4248



CWEP4848

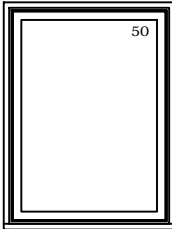


CWEP5448

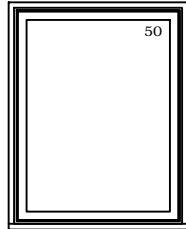


CWEP5648

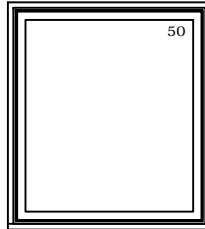
57 27/32"(1469)
59 3/8"(1508)
54 3/4"(1391)
54"(1372)
47 7/8"(1216)



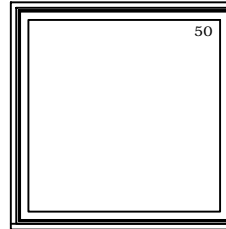
CWEP4054



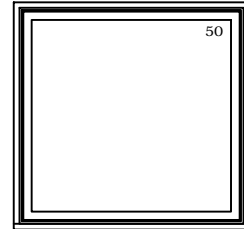
CWEP4254



CWEP4854

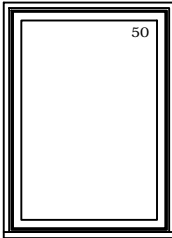


CWEP5454

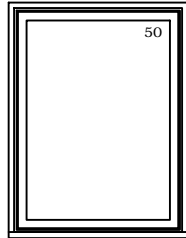


CWEP5654

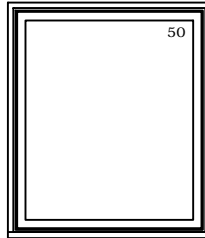
59 27/32"(1520)
61 3/8"(1559)
56 3/4"(1441)
56"(1422)
49 7/8"(1267)



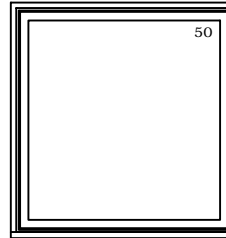
CWEP4056



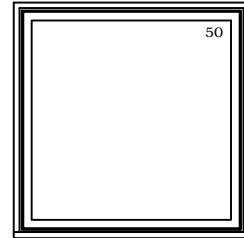
CWEP4256



CWEP4856

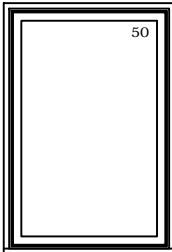


CWEP5456

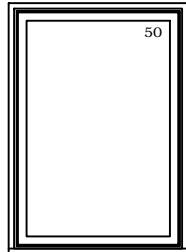


CWEP5656

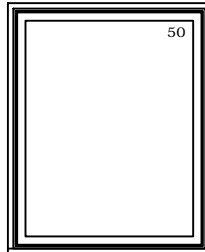
63 27/32"(1622)
65 3/8"(1660)
60 3/4"(1543)
60"(1524)
53 7/8"(1368)



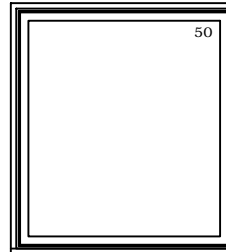
CWEP4060



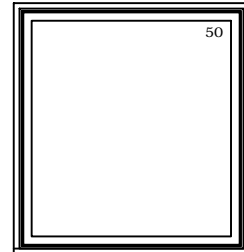
CWEP4260



CWEP4860

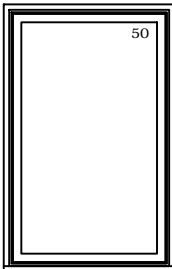


CWEP5460

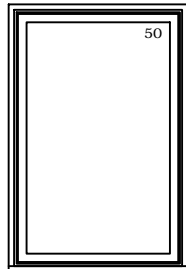


CWEP5660

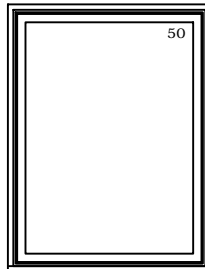
67 27/32"(1723)
69 3/8"(1762)
64 3/4"(1645)
64"(1626)
57 7/8"(1470)



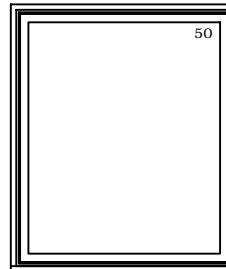
CWEP4064



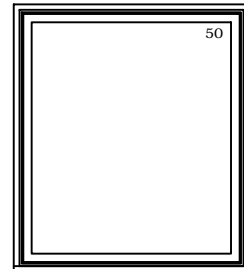
CWEP4264



CWEP4864



CWEP5464



CWEP5664

ELEVATION SYMBOL LEGEND:

M.O. = MASORNY OPENING
VALUES IN () ARE IN MILLIMETER CONVERSIONS
E BASIC UNIT CLEAR OPENING EXCEEDS 20" IN WIDTH, 24" IN HEIGHT & A MINIMUM OF 5.7 SQ. FT.
NUMBER INDICATES DESIGN PRESSURE (DP) RATING WITH STANDARD GLAZING

Note: Elevations shown DO NOT have exterior trim. Subtract 3/4"(19) from M.O.(Masonry Opening) for Unit Sizes. Masonry openings above include Sill Nose, see Trim Options page for Sill Nose specifications. For other Trim Options refer to the Unit Sizing, Rough Opening & Masonry Openings page.

ELEVATIONS
CASEMENT PICTURE UNITS

MO BRICKMOLD
MO FLAT CASING
ROUGH OPENING
FRAME SIZE
DAYLIGHT OPENING

43 3/4"(1111)
46 13/16"(1189)
40 3/4"(1035)
40"(1016)
33 7/8"(860)

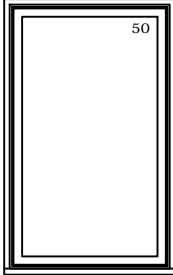
45 3/4"(1162)
48 13/16"(1240)
42 3/4"(1086)
42"(1067)
35 7/8"(911)

51 3/4"(1314)
54 13/16"(1392)
48 3/4"(1238)
48"(1219)
41 7/8"(1064)

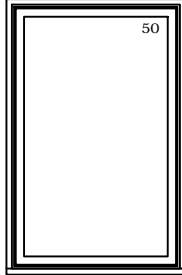
57 3/4"(1467)
60 13/16"(1545)
54 3/4"(1391)
54"(1372)
47 7/8"(1216)

59 3/4"(1518)
62 13/16"(1595)
56 3/4"(1441)
56"(1422)
49 7/8"(1267)

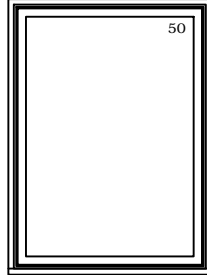
69 27/32"(1774)
71 5/8"(1813)
68 3/4"(1695)
68"(1676)
59 7/8"(1581)



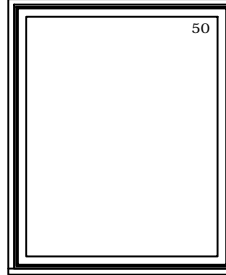
CWEP4066



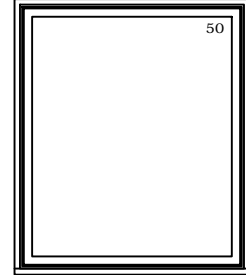
CWEP4266



CWEP4866

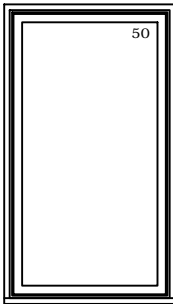


CWEP5466

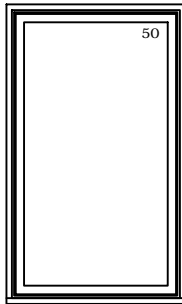


CWEP5666

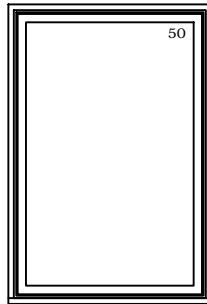
76 27/32"(1926)
77 1/8"(1965)
72 3/4"(1848)
72"(1829)
65 7/8"(1673)



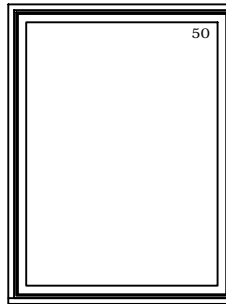
CWEP4072



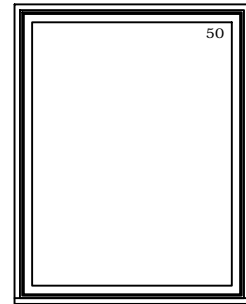
CWEP4272



CWEP4872

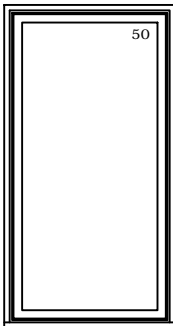


CWEP5472

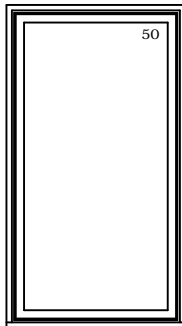


CWEP5672

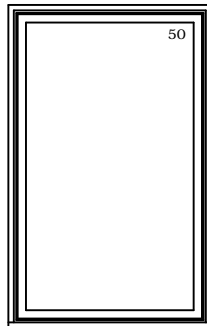
81 27/32"(2079)
83 1/8"(2118)
79 3/4"(2001)
78"(1982)
71 7/8"(1826)



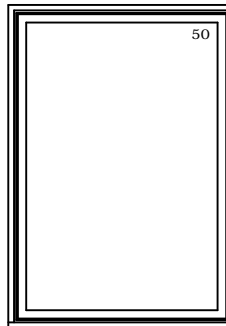
CWEP4078



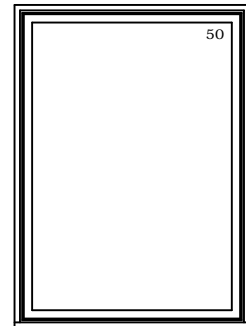
CWEP4278



CWEP4878

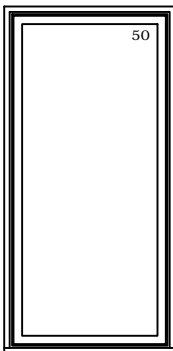


CWEP5478

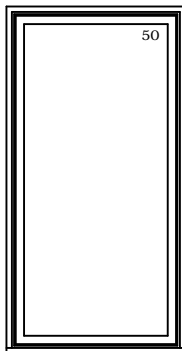


CWEP5678

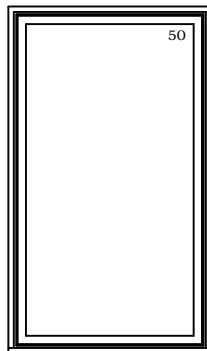
87 27/32"(2231)
89 3/8"(2270)
84 3/4"(2153)
84"(2134)
77 7/8"(1978)



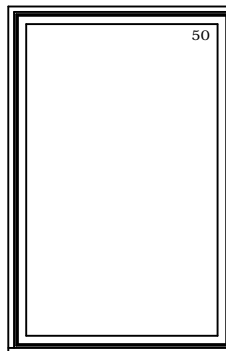
CWEP4084



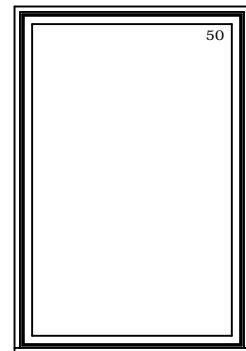
CWEP4284



CWEP4884



CWEP5484



CWEP5684

ELEVATION SYMBOL LEGEND:

M.O. = MASORNY OPENING
VALUES IN () ARE IN MILLIMETER CONVERSIONS
E. BASIC UNIT CLEAR OPENING EXCEEDS 20" IN WIDTH, 24" IN HEIGHT & A MINIMUM OF 5.7 SQ. FT.
NUMBER INDICATES DESIGN PRESSURE (DP) RATING WITH STANDARD GLAZING

Note: Elevations shown DO NOT have exterior trim. Subtract 3/4"(19) from M.O.(Masonry Opening) for Unit Sizes. Masonry openings above include Sill Nose, see Trim Options page for Sill Nose specifications. For other Trim Options refer to the Unit Sizing, Rough Opening & Masonry Openings page.

ELEVATIONS
CASEMENT PICTURE UNITS

MO BRICKMOLD
MO FLAT CASING
ROUGH OPENING
FRAME SIZE
DAYLIGHT OPENING

63 3/4"(1619)
66 13/16"(1722)
60 3/4"(1543)
60"(1524)
53 7/8"(1368)

67 3/4"(1721)
70 13/16"(1798)
64 3/4"(1645)
64"(1626)
57 7/8"(1470)

69 3/4"(1772)
72 13/16"(1849)
66 3/4"(1695)
66"(1676)
59 7/8"(1581)

75 3/4"(1924)
78 13/16"(2001)
72 3/4"(1848)
72"(1829)
65 7/8"(1673)

17 27/32"(453)
19 3/8"(492)
14 3/4"(476)
14"(458)
7 7/8"(200)



CWEP6014



CWEP6414



CWEP6614



CWEP7214

21 27/32"(555)
23 3/8"(606)
18 3/4"(476)
18"(457)
11 7/8"(302)



CWEP6018



CWEP6418



CWEP6618



CWEP7218

23 27/32"(606)
25 3/8"(645)
20 3/4"(527)
20"(508)
13 7/8"(352)



CWEP6020



CWEP6420



CWEP6620



CWEP7220

27 27/32"(707)
29 3/8"(746)
24 3/4"(629)
24"(610)
17 7/8"(464)



CWEP6024



CWEP6424



CWEP6624



CWEP7224

33 27/32"(860)
35 3/8"(909)
30 3/4"(781)
30"(762)
23 7/8"(607)



CWEP6030



CWEP6430



CWEP6630



CWEP7230

35 27/32"(910)
37 3/8"(949)
32 3/4"(832)
32"(813)
25 7/8"(657)



CWEP6032



CWEP6432



CWEP6632



CWEP7232

39 27/32"(1012)
41 3/8"(1051)
36 3/4"(933)
36"(914)
29 7/8"(759)



CWEP6036



CWEP6436



CWEP6636



CWEP7236

43 27/32"(1114)
45 3/8"(1153)
40 3/4"(1035)
40"(1016)
33 7/8"(860)



CWEP6040



CWEP6440



CWEP6640



CWEP7240

45 27/32"(1164)
47 3/8"(1203)
42 3/4"(1086)
42"(1067)
35 7/8"(911)



CWEP6042



CWEP6442



CWEP6642



CWEP7242

ELEVATION SYMBOL LEGEND:

M.O. = MASORNY OPENING
VALUES IN () ARE IN MILLIMETER CONVERSIONS
E BASIC UNIT CLEAR OPENING EXCEEDS 20" IN WIDTH, 24" IN HEIGHT & A MINIMUM OF 5.7 SQ. FT.
NUMBER INDICATES DESIGN PRESSURE (DP) RATING WITH STANDARD GLAZING

ELEVATIONS
CASEMENT PICTURE UNITS

MO BRICKMOLD
MO FLAT CASING
ROUGH OPENING
FRAME SIZE
DAYLIGHT OPENING

63 3/4"(1619)
66 13/16"(1722)
60 3/4"(1543)
60"(1524)
53 7/8"(1368)

67 3/4"(1721)
70 13/16"(1798)
64 3/4"(1645)
64"(1626)
57 7/8"(1470)

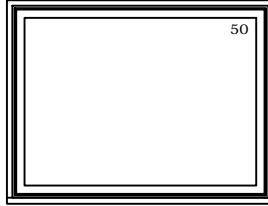
69 3/4"(1772)
72 13/16"(1849)
66 3/4"(1695)
66"(1676)
59 7/8"(1581)

75 3/4"(1924)
78 13/16"(2001)
72 3/4"(1848)
72"(1829)
65 7/8"(1673)

51 27/32"(1317)
53 3/8"(1356)
48 3/4"(1238)
48"(1219)
41 7/8"(1064)



CWEP6048



CWEP6448

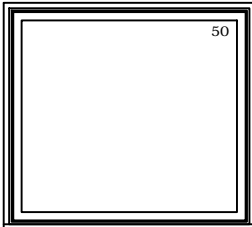


CWEP6648

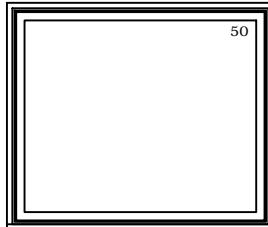


CWEP7248

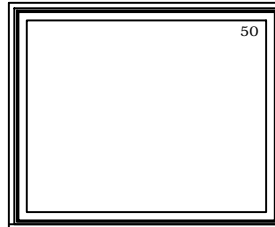
57 27/32"(1469)
59 3/8"(1508)
54 3/4"(1391)
54"(1372)
47 7/8"(1216)



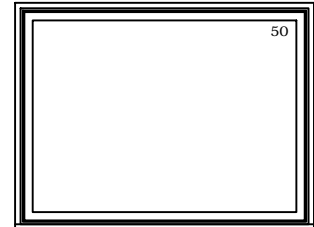
CWEP6054



CWEP6454

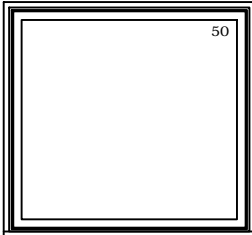


CWEP6654

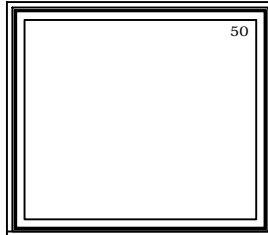


CWEP7254

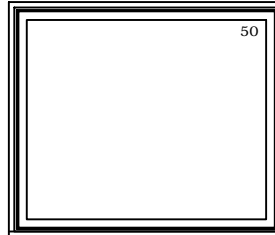
59 27/32"(1520)
61 3/8"(1559)
56 3/4"(1441)
56"(1422)
49 7/8"(1267)



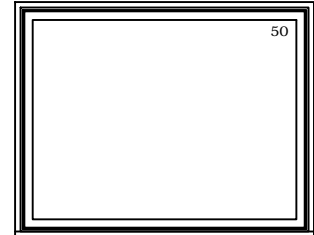
CWEP6056



CWEP6456

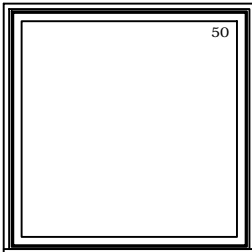


CWEP6656

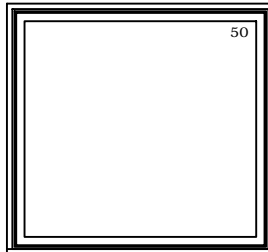


CWEP7256

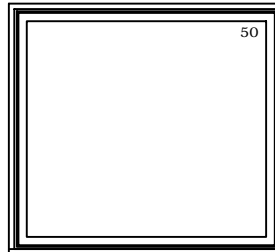
63 27/32"(1622)
65 3/8"(1660)
60 3/4"(1543)
60"(1524)
53 7/8"(1368)



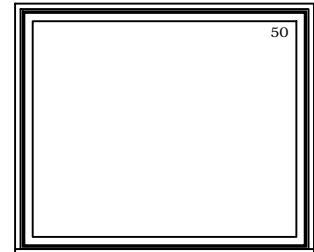
CWEP6060



CWEP6460

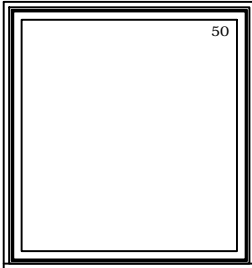


CWEP6660

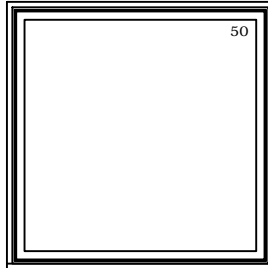


CWEP7260

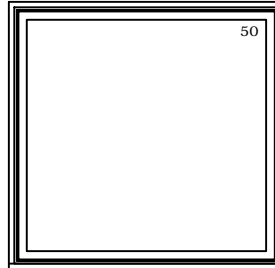
67 27/32"(1723)
69 3/8"(1762)
64 3/4"(1645)
64"(1626)
57 7/8"(1470)



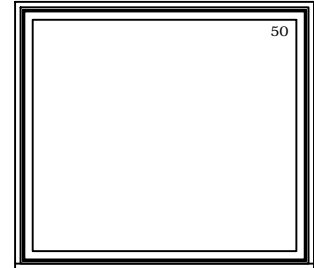
CWEP6064



CWEP6464



CWEP6664



CWEP7264

ELEVATION SYMBOL LEGEND:

M.O. = MASORNY OPENING
VALUES IN () ARE IN MILLIMETER CONVERSIONS
E BASIC UNIT CLEAR OPENING EXCEEDS 20" IN WIDTH, 24" IN HEIGHT & A MINIMUM OF 5.7 SQ. FT.
NUMBER INDICATES DESIGN PRESSURE (DP) RATING WITH STANDARD GLAZING

Note: Elevations shown DO NOT have exterior trim. Subtract 3/4"(19) from M.O. (Masonry Opening) for Unit Sizes. Masonry openings above include Sill Nose, see Trim Options page for Sill Nose specifications. For other Trim Options refer to the Unit Sizing, Rough Opening & Masonry Openings page.

ELEVATIONS
CASEMENT PICTURE UNITS

MO BRICKMOLD
MO FLAT CASING
ROUGH OPENING
FRAME SIZE
DAYLIGHT OPENING

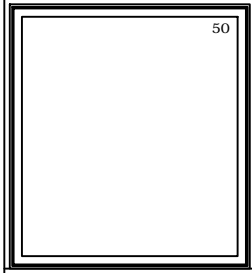
63 3/4"(1619)
66 13/16"(1722)
60 3/4"(1543)
60"(1524)
53 7/8"(1368)

67 3/4"(1721)
70 13/16"(1798)
64 3/4"(1645)
64"(1626)
57 7/8"(1470)

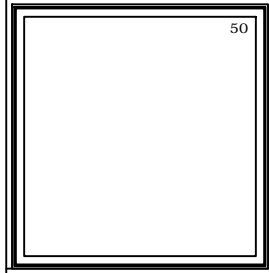
69 3/4"(1772)
72 13/16"(1849)
66 3/4"(1695)
66"(1676)
59 7/8"(1581)

75 3/4"(1924)
78 13/16"(2001)
72 3/4"(1848)
72"(1829)
65 7/8"(1673)

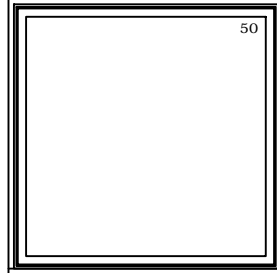
69 27/32"(1774)
71 3/8"(1813)
66 3/4"(1695)
66"(1676)
59 7/8"(1581)



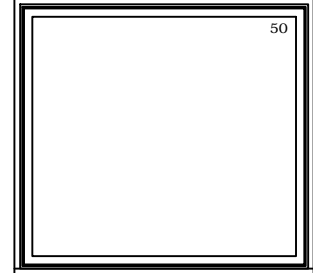
CWEP6066



CWEP6466

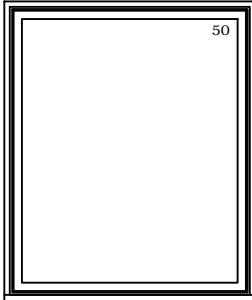


CWEP6666

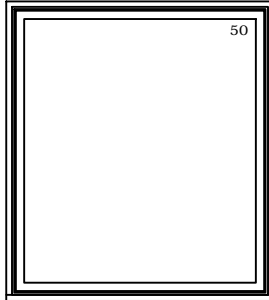


CWEP7266

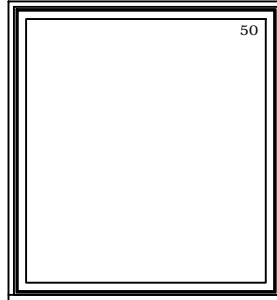
75 27/32"(1926)
77 3/8"(1965)
72 3/4"(1848)
72"(1829)
65 7/8"(1673)



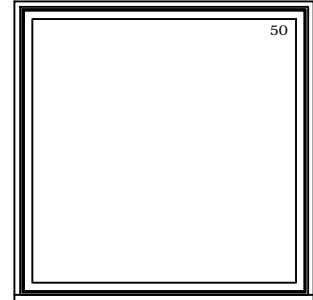
CWEP6072



CWEP6472

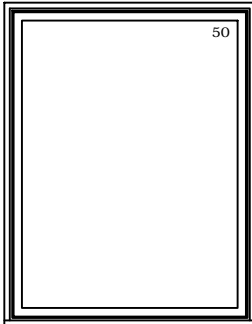


CWEP6672

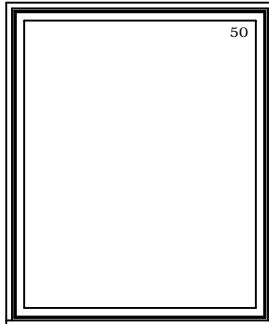


CWEP7272

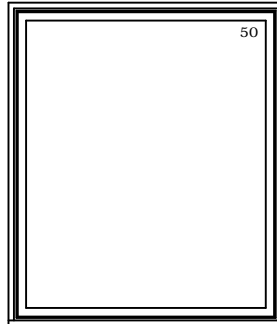
81 27/32"(2079)
83 3/8"(2118)
78 3/4"(2000)
78"(1981)
71 7/8"(1826)



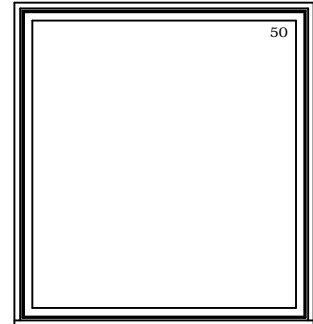
CWEP6078



CWEP6478

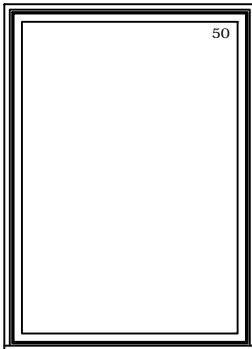


CWEP6678

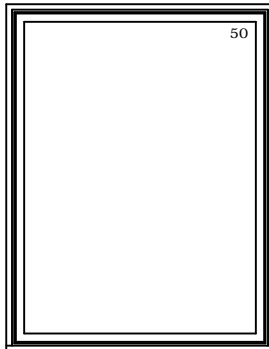


CWEP7278

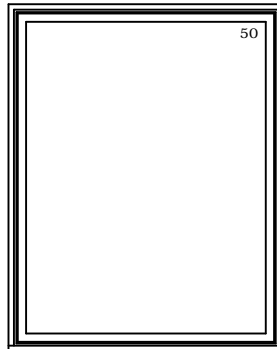
87 27/32"(2231)
89 3/8"(2270)
84 3/4"(2153)
84"(2134)
77 7/8"(1978)



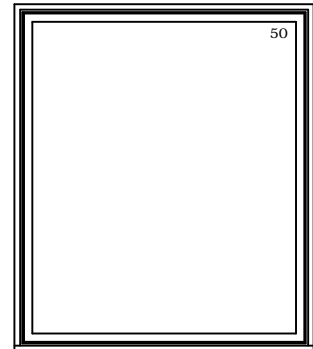
CWEP6084



CWEP6484



CWEP6684



CWEP7284

ELEVATION SYMBOL LEGEND:

M.O. = MASORNY OPENING
VALUES IN () ARE IN MILLIMETER CONVERSIONS
E BASIC UNIT CLEAR OPENING EXCEEDS 20" IN WIDTH, 24" IN HEIGHT & A MINIMUM OF 5.7 SQ. FT.
NUMBER INDICATES DESIGN PRESSURE (DP) RATING WITH STANDARD GLAZING

Note: Elevations shown DO NOT have exterior trim. Subtract 3/4"(19) from M.O. (Masonry Opening) for Unit Sizes. Masonry openings above include Sill Nose, see Trim Options page for Sill Nose specifications. For other Trim Options refer to the Unit Sizing, Rough Opening & Masonry Openings page.

ELEVATIONS
CASEMENT QUARTER-ROUND UNITS

MO BRICKMOLD 21 3/4"(552)
MO FLAT CASING 24 13/16"(630)
ROUGH OPENING 18 3/4"(476)
FRAME SIZE 18"(457)
DAYLIGHT OPENING 11 7/8"(302)

21 3/4"(552)
24 13/16"(630)
18 3/4"(476)
18"(457)
11 7/8"(302)



CWE18QRIS

23 3/4"(603)
26 13/16"(681)
20 3/4"(527)
20"(508)
13 7/8"(352)

23 3/4"(603)
26 13/16"(681)
20 3/4"(527)
20"(508)
13 7/8"(352)



CWE20QRIS

27 3/4"(705)
30 13/16"(783)
24 3/4"(629)
24"(610)
17 7/8"(454)

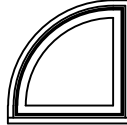
27 3/4"(705)
30 13/16"(783)
24 3/4"(629)
24"(610)
17 7/8"(454)



CWE24QRIS

31 3/4"(806)
34 13/16"(884)
28 3/4"(730)
28"(711)
21 7/8"(556)

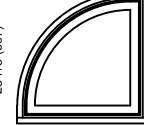
31 3/4"(806)
34 13/16"(884)
28 3/4"(730)
28"(711)
21 7/8"(556)



CWE28QRIS

33 3/4"(857)
36 13/16"(935)
30 3/4"(781)
30"(762)
23 7/8"(607)

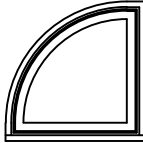
33 3/4"(857)
36 13/16"(935)
30 3/4"(781)
30"(762)
23 7/8"(607)



CWE30QRIS

MO BRICKMOLD 35 3/4"(908)
MO FLAT CASING 38 13/16"(986)
ROUGH OPENING 32 3/4"(832)
FRAME SIZE 32"(813)
DAYLIGHT OPENING 25 7/8"(657)

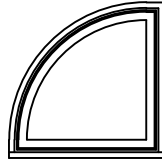
35 3/4"(908)
38 13/16"(986)
32 3/4"(832)
32"(813)
25 7/8"(657)



CWE32QRIS

39 3/4"(1010)
42 13/16"(1087)
36 3/4"(933)
36"(914)
29 7/8"(759)

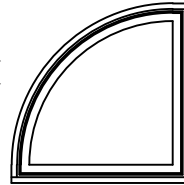
39 3/4"(1010)
42 13/16"(1087)
36 3/4"(933)
36"(914)
29 7/8"(759)



CWE36QRIS

45 3/4"(1162)
48 13/16"(1240)
42 3/4"(1086)
42"(1067)
35 7/8"(911)

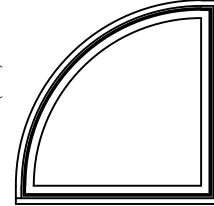
45 3/4"(1162)
48 13/16"(1240)
42 3/4"(1086)
42"(1067)
35 7/8"(911)



CWE42QRIS

51 3/4"(1314)
54 13/16"(1392)
48 3/4"(1238)
48"(1219)
41 7/8"(1064)

51 3/4"(1314)
54 13/16"(1392)
48 3/4"(1238)
48"(1219)
41 7/8"(1064)



CWE48QRIS

ELEVATION SYMBOL LEGEND:

M.O. = MASORNY OPENING
VALUES IN () ARE IN MILLIMETER CONVERSIONS

Note: Elevations shown DO NOT have exterior trim. Subtract 3/4"(19) from M.O.(Masonry Opening) for Unit Sizes. Masonry openings above include Sill Nose, see Trim Options page for Sill Nose specifications. For other Trim Options refer to the Unit Sizing, Rough Opening & Masonry Openings page.

ELEVATIONS
CASEMENT HALF-ROUND UNITS

MO BRICKMOLD
MO FLAT CASING
ROUGH OPENING
FRAME SIZE
DAYLIGHT OPENING

21 3/4"(552)
24 13/16"(630)
18 3/4"(476)
18"(457)
11 7/8"(302)



CWE18HRIS

23 3/4"(603)
26 13/16"(681)
20 3/4"(527)
20"(508)
13 7/8"(352)



CWE20HRIS

27 3/4"(705)
30 13/16"(783)
24 3/4"(629)
24"(610)
17 7/8"(454)



CWE24HRIS

31 3/4"(806)
34 13/16"(884)
28 3/4"(730)
28"(711)
21 7/8"(556)



CWE28HRIS

33 3/4"(857)
36 13/16"(935)
30 3/4"(781)
30"(762)
23 7/8"(607)



CWE30HRIS

MO BRICKMOLD
MO FLAT CASING
ROUGH OPENING
FRAME SIZE
DAYLIGHT OPENING

35 3/4"(908)
38 13/16"(986)
32 3/4"(832)
32"(813)
25 7/8"(657)



CWE32HRIS

39 3/4"(1010)
42 13/16"(1087)
36 3/4"(933)
36"(914)
29 7/8"(759)



CWE36HRIS

43 3/4"(1111)
46 13/16"(1189)
40 3/4"(1035)
40"(1016)
33 7/8"(860)



CWE40HRIS

45 3/4"(1162)
48 13/16"(1240)
42 3/4"(1086)
42"(1067)
35 7/8"(911)



CWE42HRIS

MO BRICKMOLD
MO FLAT CASING
ROUGH OPENING
FRAME SIZE
DAYLIGHT OPENING

51 3/4"(1314)
54 13/16"(1392)
48 3/4"(1238)
48"(1219)
41 7/8"(1064)



CWE48HRIS

57 3/4"(1467)
60 13/16"(1545)
54 3/4"(1391)
54"(1372)
47 7/8"(1216)



CWE54HRIS

59 3/4"(1518)
62 13/16"(1595)
56 3/4"(1441)
56"(1422)
49 7/8"(1267)



CWE56HRIS

MO BRICKMOLD
MO FLAT CASING
ROUGH OPENING
FRAME SIZE
DAYLIGHT OPENING

63 3/4"(1619)
66 13/16"(1697)
60 3/4"(1543)
60"(1524)
53 7/8"(1368)



CWE60HRIS

67 3/4"(1721)
70 13/16"(1799)
64 3/4"(1645)
64"(1626)
57 7/8"(1470)



CWE64HRIS

69 3/4"(1772)
72 13/16"(1849)
66 3/4"(1695)
66"(1676)
59 7/8"(1581)



CWE66HRIS

MO BRICKMOLD
MO FLAT CASING
ROUGH OPENING
FRAME SIZE
DAYLIGHT OPENING

75 3/4"(1924)
78 13/16"(2002)
72 3/4"(1848)
72"(1829)
65 7/8"(1673)



CWE72HRIS

87 3/4"(2229)
90 13/16"(2307)
84 3/4"(2153)
84"(2134)
77 7/8"(1978)



CWE84HRIS

MO BRICKMOLD
MO FLAT CASING
ROUGH OPENING
FRAME SIZE
DAYLIGHT OPENING

93 3/4"(2381)
96 13/16"(2459)
90 3/4"(2305)
90"(2286)
83 7/8"(2130)



CWE90HRIS

99 3/4"(2534)
102 13/16"(2611)
96 3/4"(2457)
96"(2438)
89 7/8"(2283)



CWE96HRIS

ELEVATION SYMBOL LEGEND:

M.O. = MASORNY OPENING
VALUES IN () ARE IN MILLIMETER CONVERSIONS

Note: Elevations shown DO NOT have exterior trim. Subtract 3/4"(19) from M.O.(Masonry Opening) for Unit Sizes. Masonry openings above include Sill Nose, see Trim Options page for Sill Nose specifications. For other Trim Options refer to the Unit Sizing, Rough Opening & Masonry Openings page.

ELEVATIONS
EXTENDED QUARTER-ROUND UNITS

MO BRICKMOLD	21 3/4"(552)	23 3/4"(603)	27 3/4"(705)	31 3/4"(806)	33 3/4"(857)
MO FLAT CASING	24 13/16"(630)	26 13/16"(681)	30 13/16"(783)	34 13/16"(884)	36 13/16"(935)
ROUGH OPENING	18 3/4"(476)	20 3/4"(527)	24 3/4"(629)	28 3/4"(730)	30 3/4"(781)
FRAME SIZE	18"(457)	20"(508)	24"(610)	28"(586)	30"(762)
DAYLIGHT OPENING	11 7/8"(302)	13 7/8"(352)	17 7/8"(454)	21 7/8"(556)	23 7/8"(607)
33 27/32"(860) 35 3/8"(889) 30 3/4"(781) 30"(762) 23 7/8"(607)					
35 27/32"(910) 37 3/8"(949) 32 3/4"(832) 32"(813) 25 7/8"(657)					
39 27/32"(1012) 41 3/8"(1051) 36 3/4"(933) 36"(914) 29 7/8"(759)					
43 27/32"(1114) 45 3/8"(1153) 40 3/4"(1035) 40"(1016) 33 7/8"(860)					
45 27/32"(1164) 45 3/8"(1203) 42 3/4"(1086) 42"(1067) 35 7/8"(911)					
51 27/32"(1317) 53 3/8"(1356) 48 3/4"(1238) 48"(1219) 41 7/8"(1064)					
57 27/32"(1469) 59 3/8"(1508) 54 3/4"(1391) 54"(1372) 47 7/8"(1216)					
59 27/32"(1520) 61 3/8"(1559) 56 3/4"(1441) 56"(1422) 49 7/8"(1267)					
63 27/32"(1622) 65 3/8"(1660) 60 3/4"(1543) 60"(1524) 53 7/8"(1368)					
67 27/32"(1723) 69 3/8"(1762) 64 3/4"(1645) 64"(1626) 57 7/8"(1470)					

ELEVATION SYMBOL LEGEND:
M.O. = MASORNY OPENING
VALUES IN () ARE IN MILLIMETER CONVERSIONS
VALUES IN [] ARE NUMBER OF DAYLIGHT OPENINGS PER UNIT
* STATIONARY UNIT
** LIMITED OPERATION
NUMBER INDICATES DESIGN PRESSURE (DP) RATING WITH STANDARD GLAZING

Note: Elevations shown DO NOT have exterior trim. Subtract 1/2"(12.7) from M.O.(Masonry Opening) for Unit Sizes. Masonry openings above include Sill Nose, see Trim Options page for Sill Nose specifications. For other Trim Options refer to the Unit Sizing, Rough Opening & Masonry Openings page.

ELEVATIONS
EXTENDED QUARTER-ROUND UNITS

MO BRICKMOLD	21 3/4"(552)	23 3/4"(603)	27 3/4"(705)	31 3/4"(806)	33 3/4"(857)
MO FLAT CASING	24 13/16"(630)	26 13/16"(681)	30 13/16"(783)	34 13/16"(884)	36 13/16"(935)
ROUGH OPENING	18 3/4"(476)	20 3/4"(527)	24 3/4"(629)	28 3/4"(730)	30 3/4"(781)
FRAME SIZE	18"(457)	20"(508)	24"(610)	28"(586)	30"(762)
DAYLIGHT OPENING	11 7/8"(302)	13 7/8"(352)	17 7/8"(454)	21 7/8"(556)	23 7/8"(607)

69 27/32"(1774)					
	CWEQ1866	CWEQ2066	CWEQ2466	CWEQ2866	CWEQ3066
75 27/32"(1926)					
	CWEQ1872	CWEQ2072	CWEQ2472	CWEQ2872	CWEQ3072
81 27/32"(2079)					
	CWEQ1878	CWEQ2078	CWEQ2478	CWEQ2878	CWEQ3078
87 27/32"(2231)					
	CWEQ1884	CWEQ2084	CWEQ2484	CWEQ2884	CWEQ3084

ELEVATION SYMBOL LEGEND:
M.O. = MASORNY OPENING
VALUES IN () ARE IN MILLIMETER CONVERSIONS
VALUES IN [] ARE NUMBER OF DAYLIGHT OPENINGS PER UNIT
* STATIONARY UNIT
** LIMITED OPERATION
NUMBER INDICATES DESIGN PRESSURE (DP) RATING WITH STANDARD GLAZING

Note: Elevations shown DO NOT have exterior trim. Subtract 1/2"(12.7) from M.O.(Masonry Opening) for Unit Sizes. Masonry openings above include Sill Nose, see Trim Options page for Sill Nose specifications. For other Trim Options refer to the Unit Sizing, Rough Opening & Masonry Openings page.

ELEVATIONS
EXTENDED HALF-ROUND UNITS

MO BRICKMOLD	21 3/4"(552)	23 3/4"(603)	27 3/4"(705)	31 3/4"(806)	33 3/4"(857)
MO FLAT CASING	24 13/16"(630)	26 13/16"(681)	30 13/16"(783)	34 13/16"(884)	36 13/16"(935)
ROUGH OPENING	18 3/4"(476)	20 3/4"(527)	24 3/4"(629)	28 3/4"(730)	30 3/4"(781)
FRAME SIZE	18"(457)	20"(508)	24"(610)	28"(711)	30"(762)
DAYLIGHT OPENING	11 7/8"(302)	13 7/8"(352)	17 7/8"(454)	21 7/8"(556)	23 7/8"(607)

27 27/32"(707) 29 3/8"(749) 24 3/4"(629) 24"(610) 17 7/8"(454)					
	CWCH1824	CWCH2024	CWCH2424		
33 27/32"(860) 35 3/8"(899) 30 3/4"(781) 30 7/16"(782) 23 7/8"(607)					
	CWCH1830	CWCH2030	CWCH2430	CWCH2830	CWCH3030
35 27/32"(910) 37 3/8"(949) 32 3/4"(832) 32 1/8"(831) 25 7/8"(657)					
	CWCH1832	CWCH2032	CWCH2432	CWCH2832	CWCH3032
39 27/32"(1012) 41 3/8"(1051) 36 3/4"(933) 36"(914) 29 7/8"(759)					
	CWCH1836	CWCH2036	CWCH2436	CWCH2836	CWCH3036
43 27/32"(1114) 45 3/8"(1153) 40 3/4"(1035) 40"(1016) 33 7/8"(860)					
	CWCH1840	CWCH2040	CWCH2440	CWCH2840	CWCH3040
45 27/32"(1164) 47 3/8"(1203) 42 3/4"(1086) 42"(1067) 35 7/8"(911)					
	CWCH1842	CWCH2042	CWCH2442	CWCH2842	CWCH3042
51 27/32"(1317) 53 3/8"(1356) 48 3/4"(1238) 48"(1219) 41 7/8"(1064)					
	CWCH1848	CWCH2048	CWCH2448	CWCH2848	CWCH3048

ELEVATION SYMBOL LEGEND:
M.O. = MASORNY OPENING
VALUES IN () ARE IN MILLIMETER CONVERSIONS
E BASIC UNIT CLEAR OPENING EXCEEDS 20" IN WIDTH, 24" IN HEIGHT & A MINIMUM OF 5.7 SQ. FT.
* STATIONARY UNIT
** BASIC UNIT REQUIRES LIMIT DEVICE ON SASH WHEN OPERATING
NUMBER INDICATES DESIGN PRESSURE (DP) RATING WITH STANDARD GLAZING

Note: Elevations shown DO NOT have exterior trim. Subtract 1/2"(12.7) from M.O.(Masonry Opening) for Unit Sizes. Masonry openings above include Sill Nose, see Trim Options page for Sill Nose specifications. For other Trim Options refer to the Unit Sizing, Rough Opening & Masonry Openings page.

ELEVATIONS
EXTENDED HALF-ROUND UNITS

MO BRICKMOLD	21 3/4"(552)	23 3/4"(603)	27 3/4"(705)	31 3/4"(806)	33 3/4"(857)
MO FLAT CASING	24 13/16"(630)	26 13/16"(681)	30 13/16"(783)	34 13/16"(884)	36 13/16"(935)
ROUGH OPENING	18 3/4"(476)	20 3/4"(527)	24 3/4"(629)	28 3/4"(730)	30 3/4"(781)
FRAME SIZE	18"(457)	20"(508)	24"(610)	28"(711)	30"(762)
DAYLIGHT OPENING	11 7/8"(302)	13 7/8"(352)	17 7/8"(454)	21 7/8"(556)	23 7/8"(607)

<p>57 27/32"(1469) 58 3/8"(1508) 54 3/4"(1391) 54"(1372) 47 7/8"(1216)</p>					
<p>59 27/32"(1520) 61 3/8"(1559) 56 3/4"(1441) 56"(1422) 49 7/8"(1267)</p>					
<p>63 27/32"(1622) 65 3/8"(1660) 60 3/4"(1543) 60"(1524) 53 7/8"(1368)</p>					
<p>67 27/32"(1723) 69 3/8"(1762) 64 3/4"(1645) 64"(1626) 57 7/8"(1470)</p>					
<p>69 27/32"(1774) 71 3/8"(1813) 66 3/4"(1695) 66"(1676) 59 7/8"(1581)</p>					

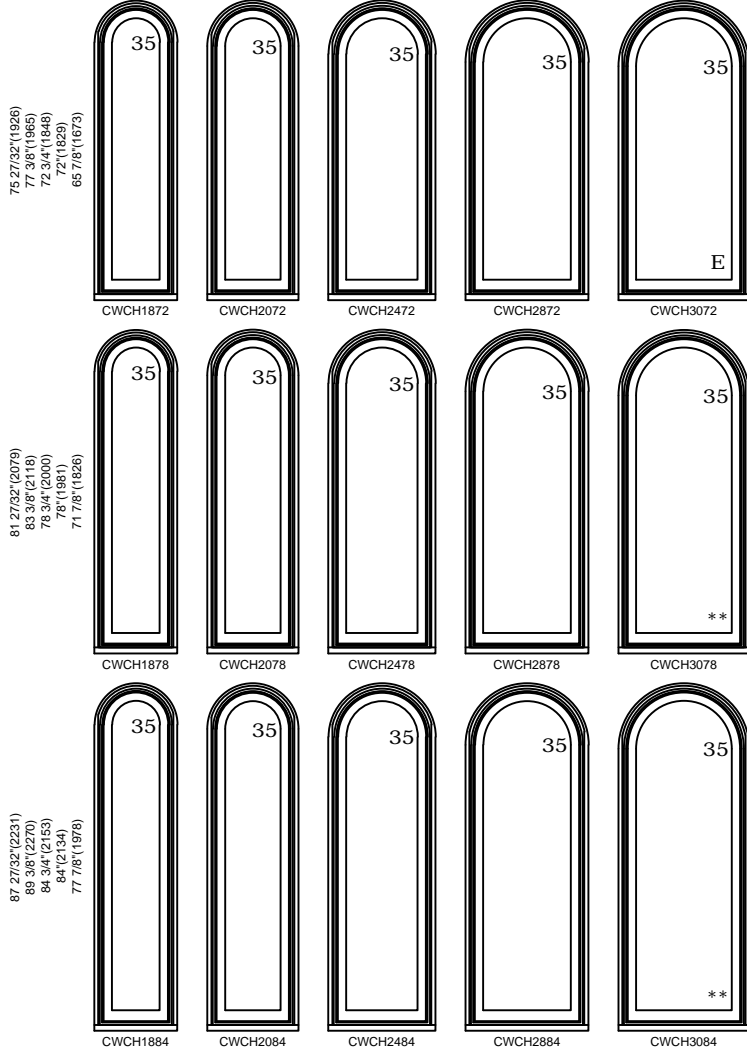
ELEVATION SYMBOL LEGEND:

- M.O. = MASORNY OPENING
- VALUES IN () ARE IN MILLIMETER CONVERSIONS
- E BASIC UNIT CLEAR OPENING EXCEEDS 20" IN WIDTH, 24" IN HEIGHT & A MINIMUM OF 5.7 SQ. FT.
- * STATIONARY UNIT
- ** BASIC UNIT REQUIRES LIMIT DEVICE ON SASH WHEN OPERATING
- ## NUMBER INDICATES DESIGN PRESSURE (DP) RATING WITH STANDARD GLAZING

Note: Elevations shown DO NOT have exterior trim. Subtract 1/2"(12.7) from M.O.(Masonry Opening) for Unit Sizes. Masonry openings above include Sill Nose, see Trim Options page for Sill Nose specifications. For other Trim Options refer to the Unit Sizing, Rough Opening & Masonry Openings page.

ELEVATIONS
EXTENDED HALF-ROUND UNITS

MO BRICKMOLD	21 3/4"(552)	23 3/4"(603)	27 3/4"(705)	31 3/4"(806)	33 3/4"(857)
MO FLAT CASING	24 13/16"(630)	26 13/16"(681)	30 13/16"(783)	34 13/16"(884)	36 13/16"(935)
ROUGH OPENING	18 3/4"(476)	20 3/4"(527)	24 3/4"(629)	28 3/4"(730)	30 3/4"(781)
FRAME SIZE	18"(457)	20"(508)	24"(610)	28"(711)	30"(762)
DAYLIGHT OPENING	11 7/8"(302)	13 7/8"(352)	17 7/8"(454)	21 7/8"(556)	23 7/8"(607)



ELEVATION SYMBOL LEGEND:

- M.O. = MASORNY OPENING
- VALUES IN () ARE IN MILLIMETER CONVERSIONS
- E BASIC UNIT CLEAR OPENING EXCEEDS 20" IN WIDTH, 24" IN HEIGHT & A MINIMUM OF 5.7 SQ. FT.
- * STATIONARY UNIT
- ** BASIC UNIT REQUIRES LIMIT DEVICE ON SASH WHEN OPERATING
- ## NUMBER INDICATES DESIGN PRESSURE (DP) RATING WITH STANDARD GLAZING

Note: Elevations shown DO NOT have exterior trim. Subtract 1/2"(12.7) from M.O.(Masonry Opening) for Unit Sizes. Masonry openings above include Sill Nose, see Trim Options page for Sill Nose specifications. For other Trim Options refer to the Unit Sizing, Rough Opening & Masonry Openings page.